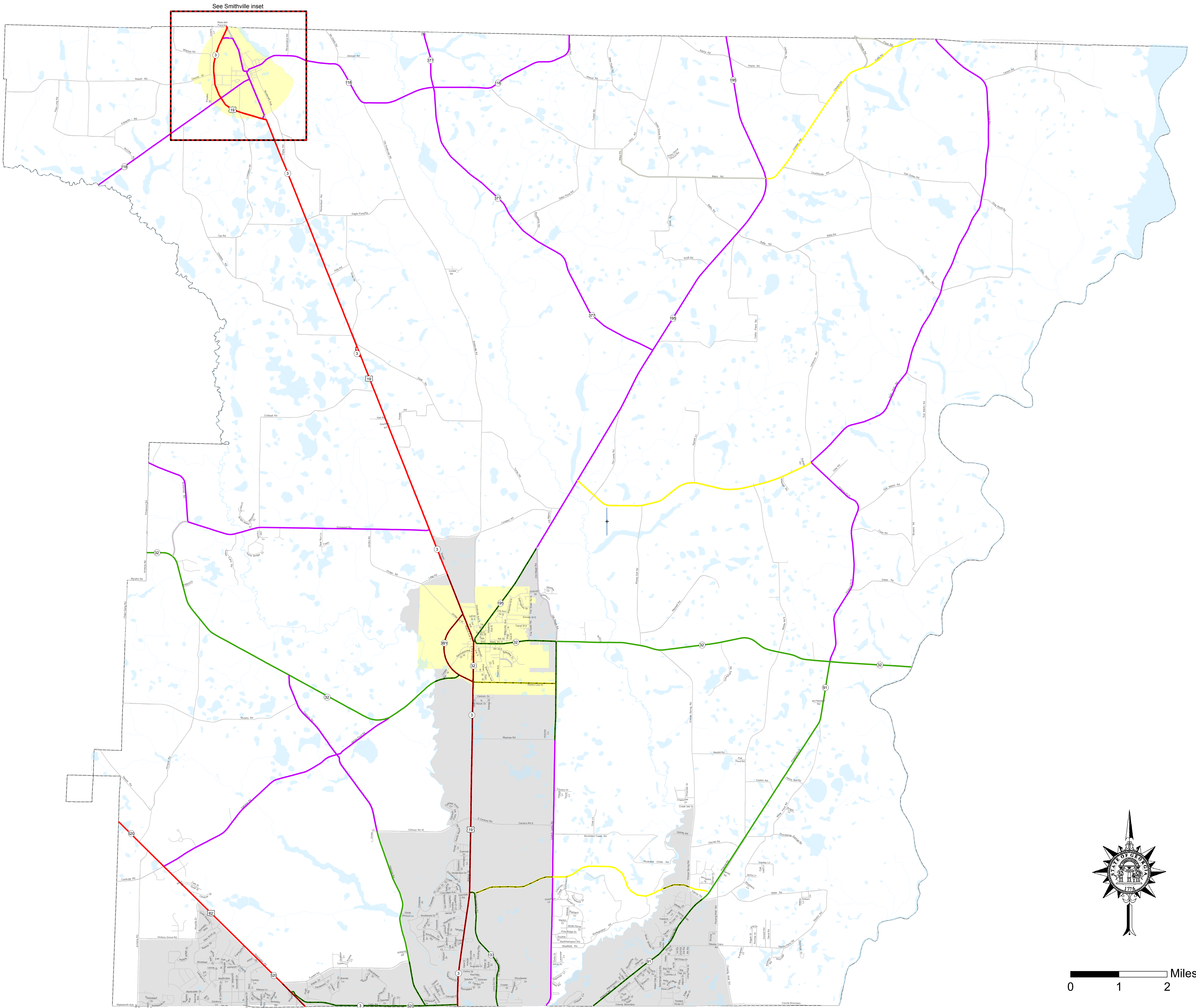
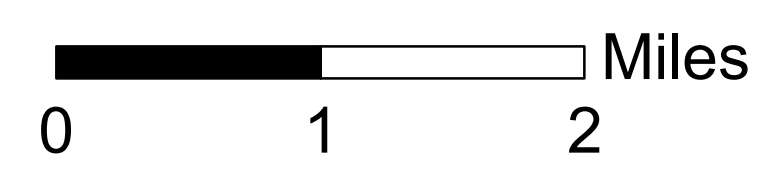
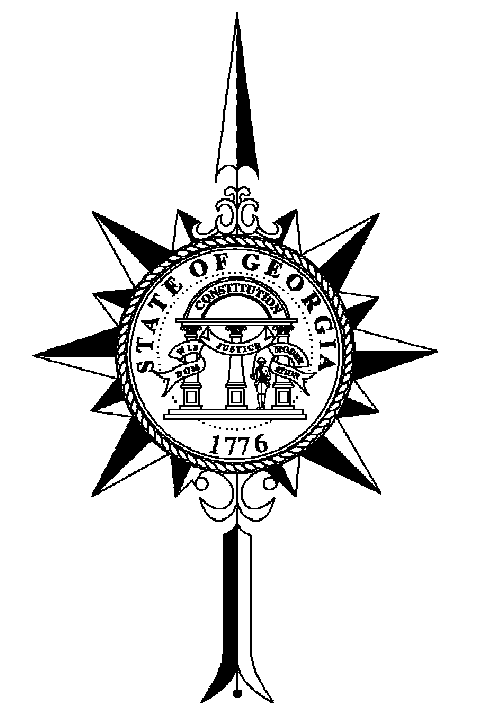


SMITHVILLE



See Smithville inset



Functional Classification

- Urban Collector Street
- Urban Minor Arterial Street
- Urban Principal Arterial
- Urban Freeway and Expressway
- Urban Interstate Principal Arterial
- Urban Local Road
- Rural Minor Collector
- Rural Major Collector
- Rural Minor Arterial
- Rural Principal Arterial
- Rural Interstate Principal Arterial
- Rural Local Road
- - - Projected_Routes
- Urban Area Boundary

Prepared by the Georgia Department of Transportation, Office of Transportation Data, in cooperation with the U.S. Department of Transportation Federal Highway Administration. The Georgia Department of Transportation makes no representation or warranties, implied or expressed, concerning the accuracy, completeness, reliability, or suitability for any particular purpose of this information and data contained in this map.
Note: Inset maps are on different scales.

Order #	Approval Date	Completion Date	Route Adjustment
3410	1/20/2006		SR-1136, 1136TA - TE and US-19 - Smithville Bypass Adjust the State and U.S. Route System
FHWA APPR	8/10/2009		Functional Classification Revision - Leesburg City Street 573
3410	1/20/2006	11/27/2009	Relocation of SR - SR 3, SR1136, SR1136TA-1136TE
FHWA APPR	1/31/2006	11/27/2009	Functional Classification Revision - SR 3, SR1136, SR1136TA-1136TE
FHWA APPR	7/9/2010		Reclassify CR-452 - Urban Local to Urban Collector and Rural Local to Rural Minor Collector