

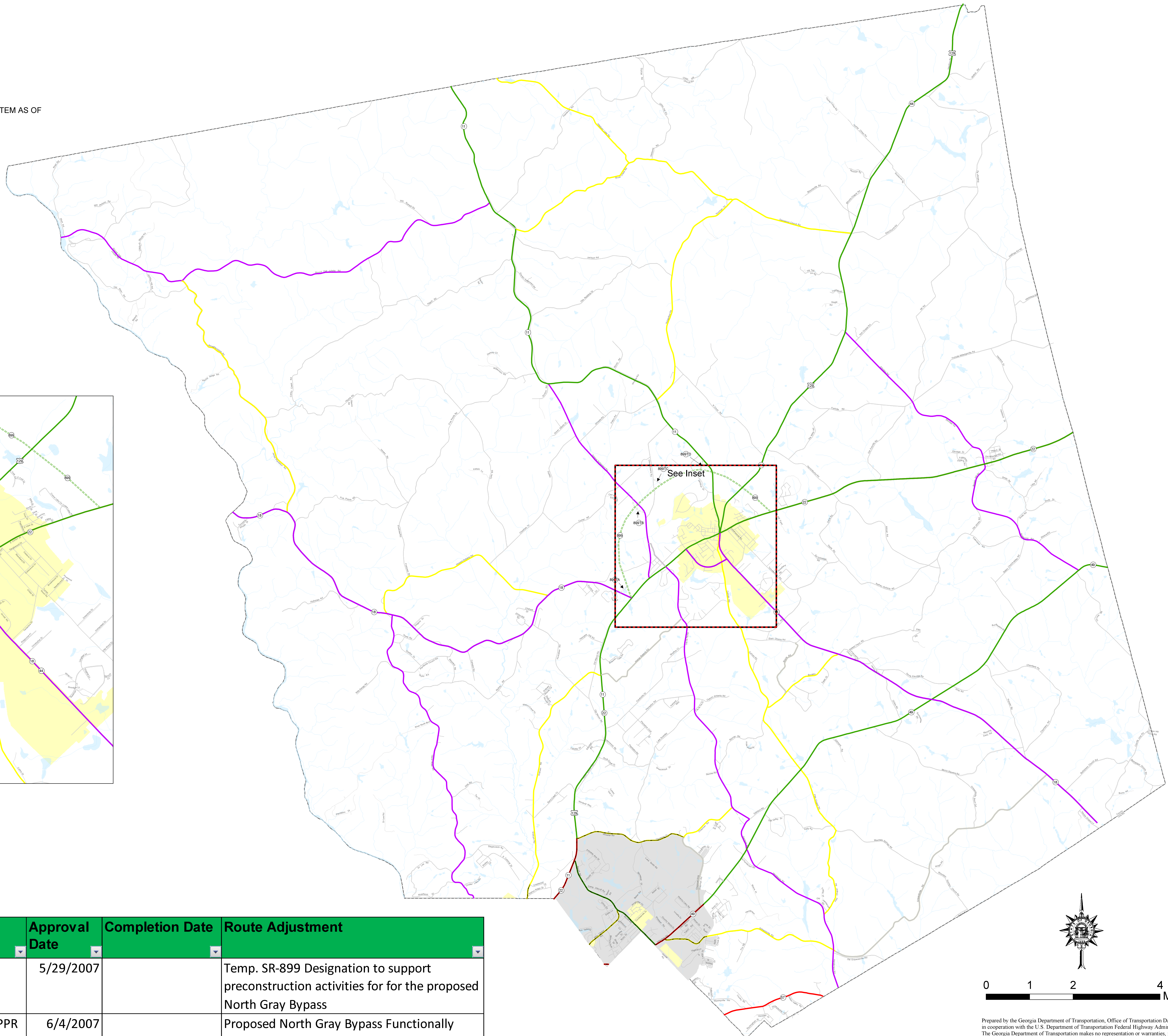
FUNCTIONAL CLASSIFICATION MAP

JONES COUNTY
GEORGIA

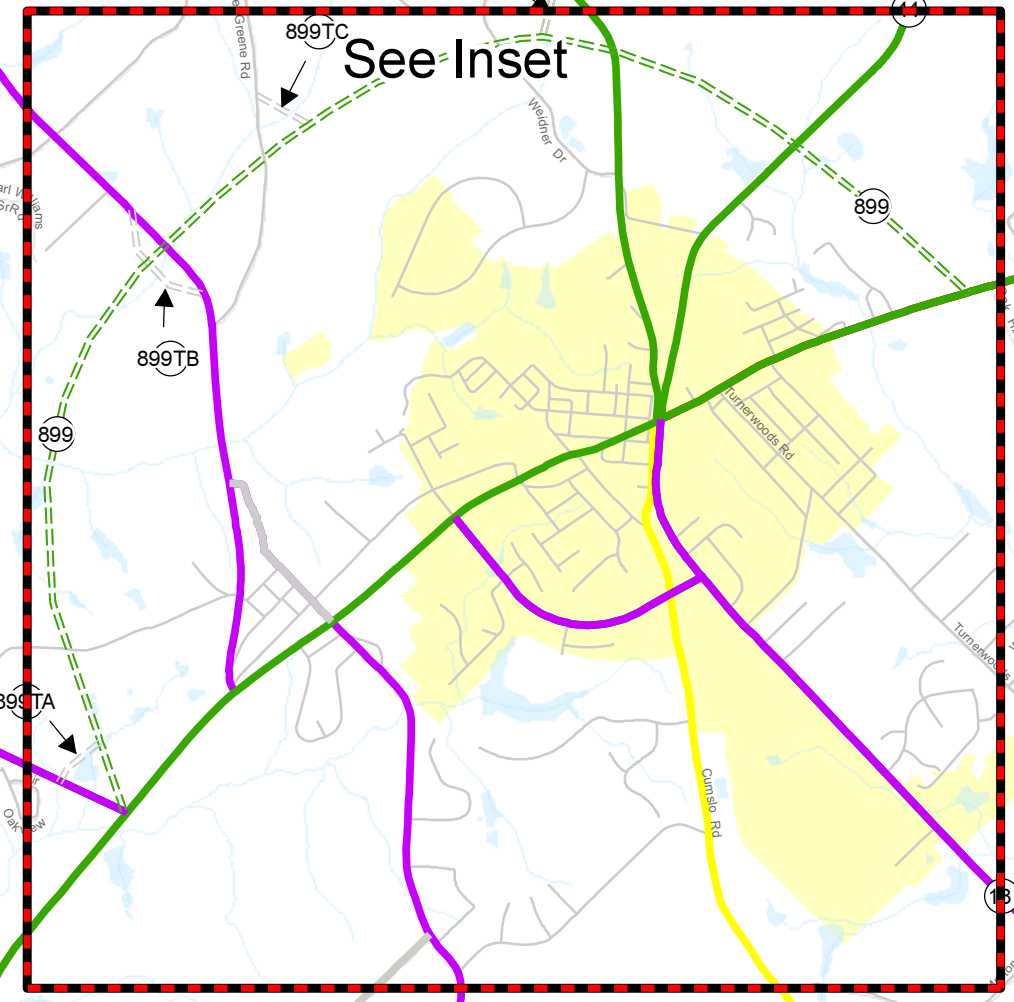
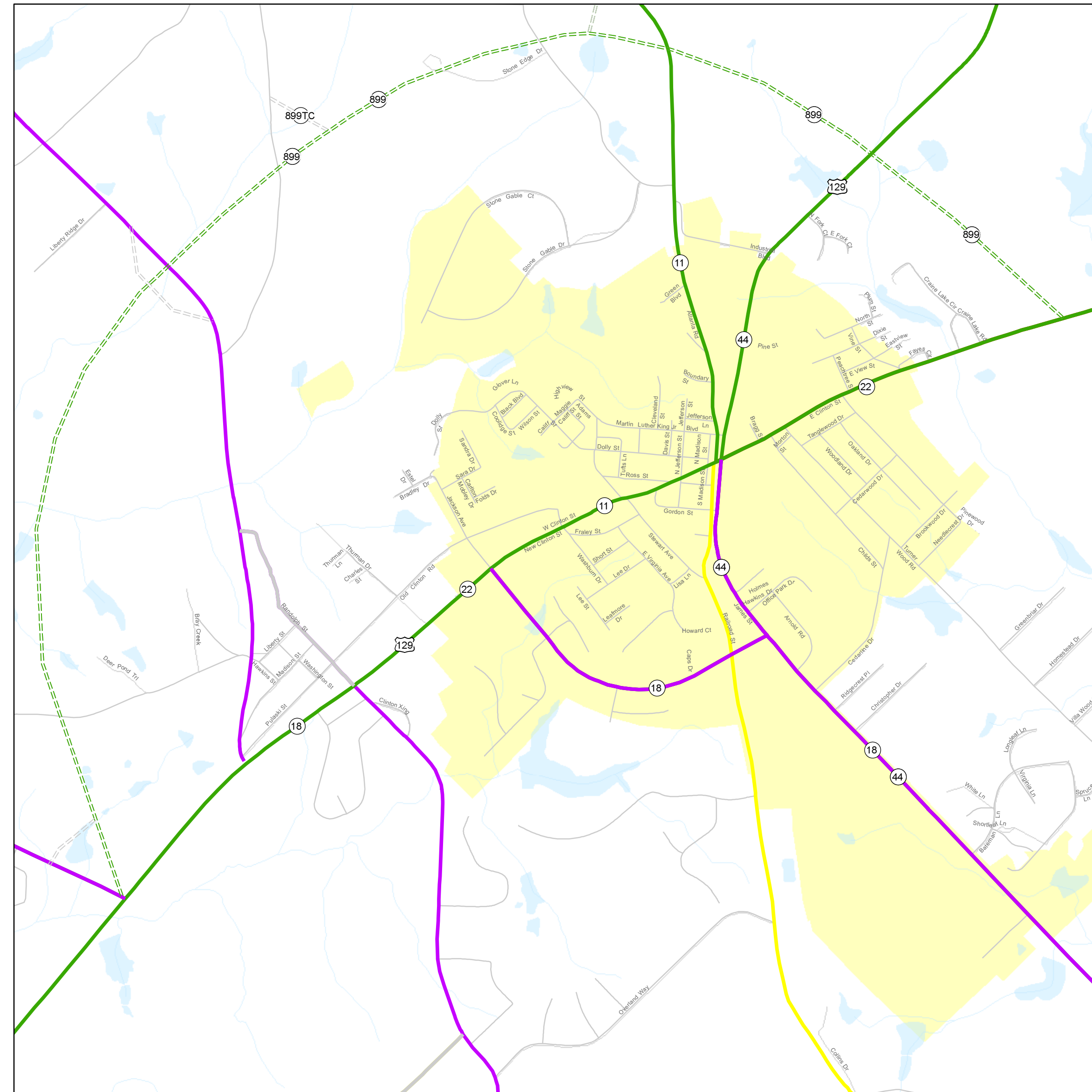
PREPARED BY THE
DEPARTMENT OF TRANSPORTATION
OFFICE OF TRANSPORTATION DATA
IN COOPERATION WITH

U. S. DEPARTMENT OF TRANSPORTATION
FEDERAL HIGHWAY ADMINISTRATION

STATE HIGHWAY, U.S. ROUTE, AND FUNCTIONAL CLASSIFICATION SYSTEM AS OF
DECEMBER 2010



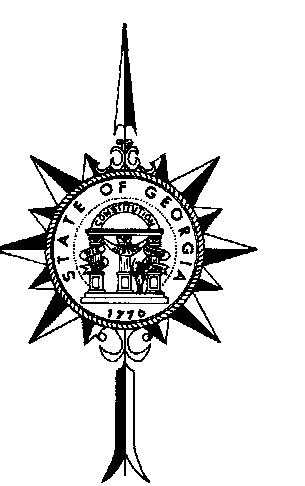
GRAY



Functional Classification

- Urban Collector Street
- Urban Minor Arterial Street
- Urban Principal Arterial
- Urban Freeway and Expressway
- Urban Interstate Principal Arterial
- Urban Local Road
- Rural Minor Collector
- Rural Major Collector
- Rural Minor Arterial
- Rural Principal Arterial
- Rural Interstate Principal Arterial
- Rural Local Road
- - - Projected_Routes
- Urban Area Boundary

Order #	Approval Date	Completion Date	Route Adjustment
3346	5/29/2007		Temp. SR-899 Designation to support preconstruction activities for for the proposed North Gray Bypass
FHWA APPR	6/4/2007		Proposed North Gray Bypass Functionally Classified as a Rural Minor Arterial



Prepared by the Georgia Department of Transportation, Office of Transportation Data, in cooperation with the U.S. Department of Transportation Federal Highway Administration. The Georgia Department of Transportation makes no representation or warranties, implied or expressed, concerning the accuracy, completeness, reliability, or suitability for any particular purpose of this information and data contained in this map.

Note: Inset maps are on different scales.