

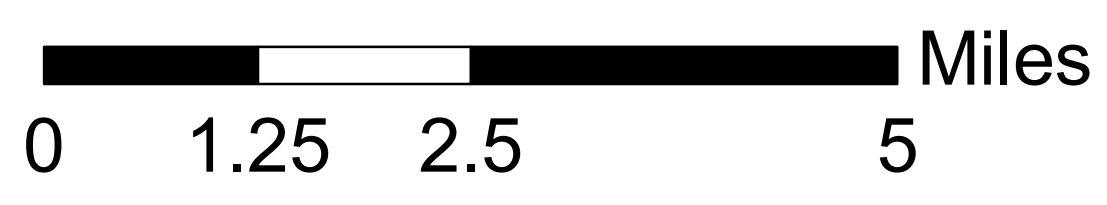
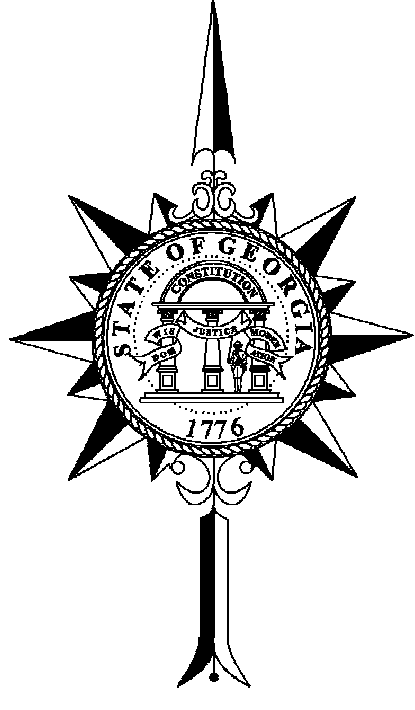
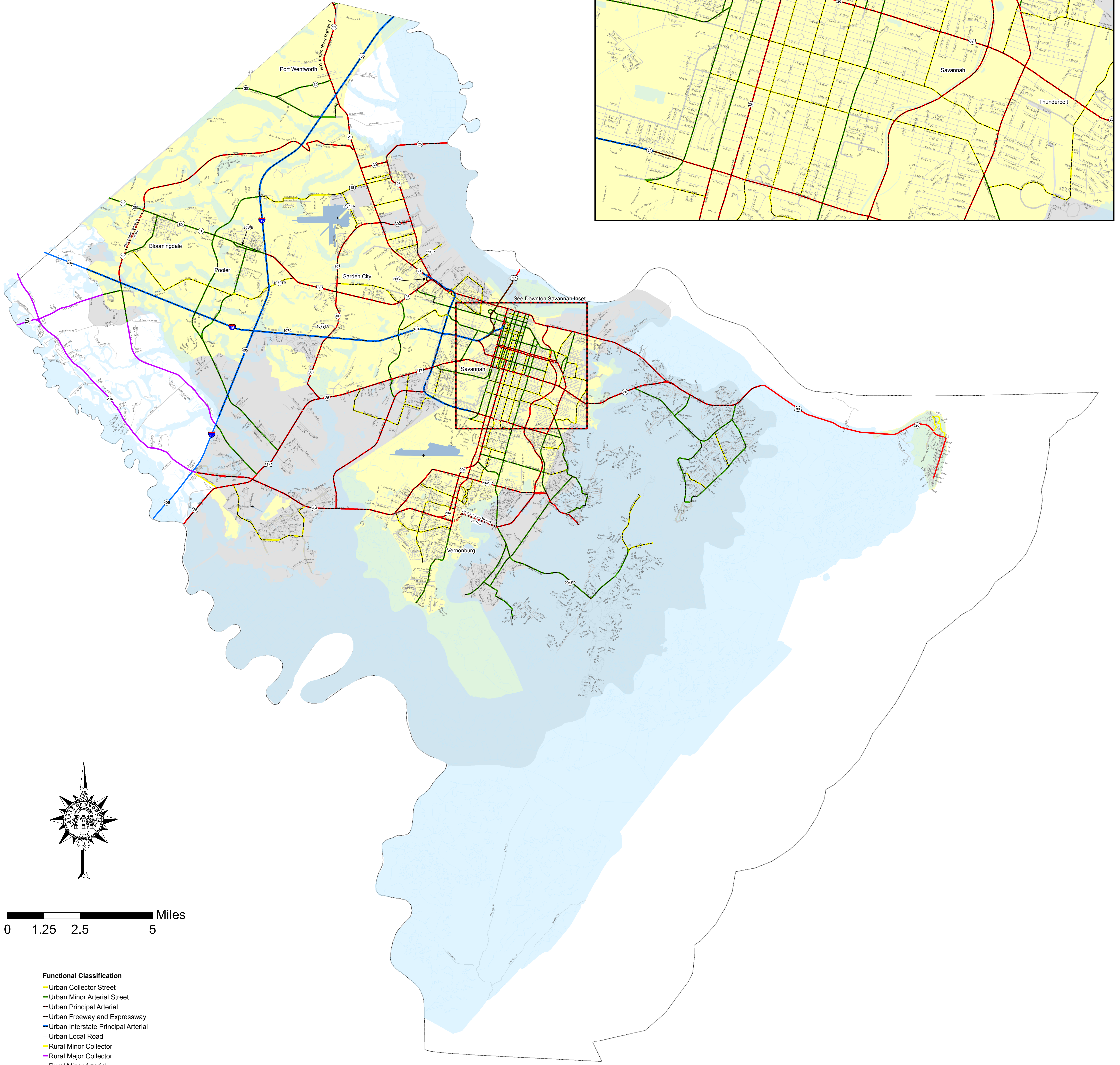
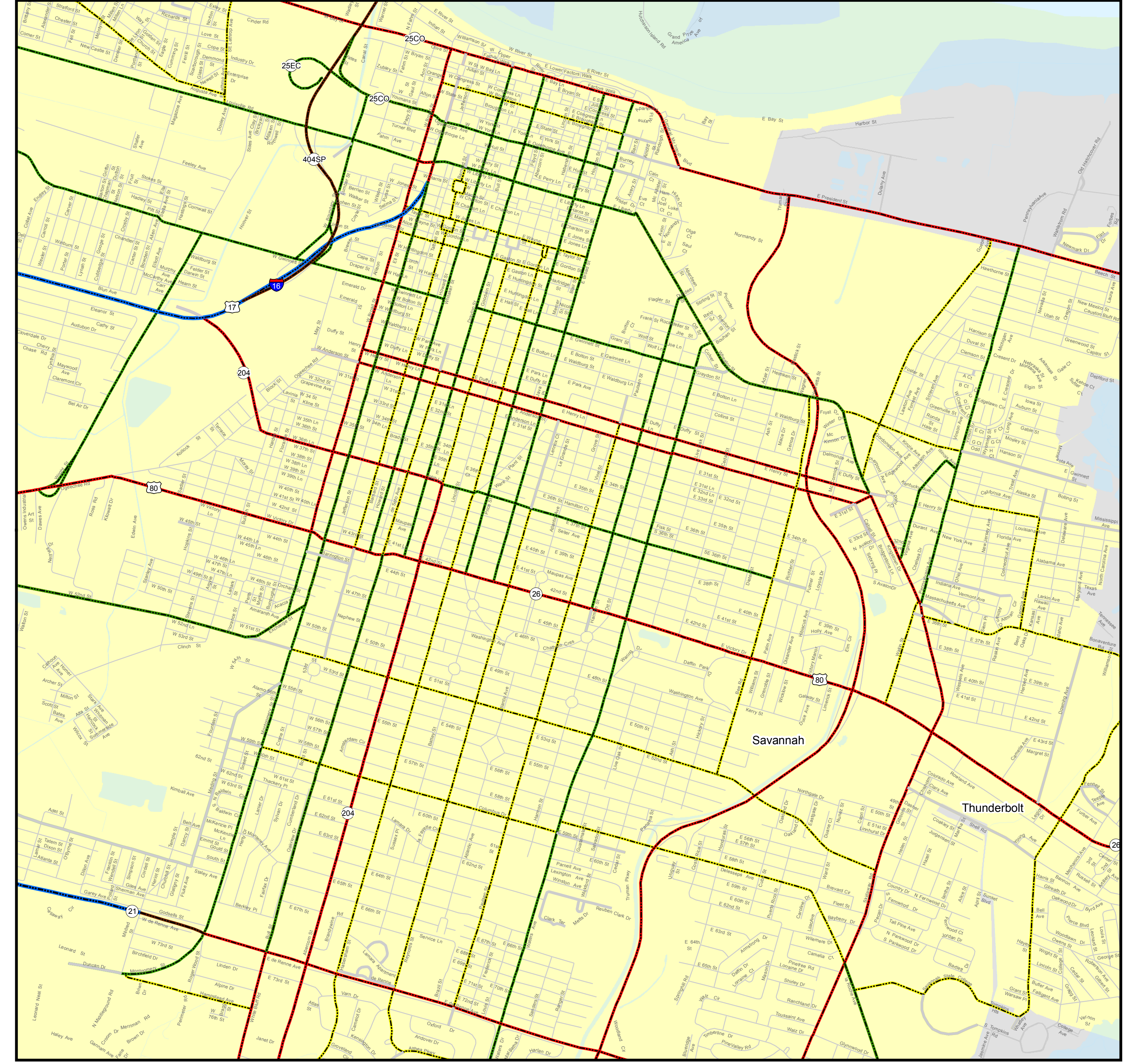
**FUNCTIONAL CLASSIFICATION MAP
CHATHAM COUNTY
GEORGIA**

PREPARED BY THE
DEPARTMENT OF TRANSPORTATION
OFFICE OF TRANSPORTATION DATA

IN COOPERATION WITH
U. S. DEPARTMENT OF TRANSPORTATION
FEDERAL HIGHWAY ADMINISTRATION

STATE HIGHWAY, U.S. ROUTE, AND FUNCTIONAL CLASSIFICATION SYSTEM AS OF
DECEMBER 2010

Downtown Savannah



- Functional Classification**
- Urban Collector Street
 - Urban Minor Arterial Street
 - Urban Principal Arterial
 - Urban Freeway and Expressway
 - Urban Interstate Principal Arterial
 - Urban Local Road
 - Rural Minor Collector
 - Rural Major Collector
 - Rural Minor Arterial
 - Rural Principal Arterial
 - Rural Interstate Principal Arterial
 - Rural Local Road
 - Projected_Routes
 - Urban Area Boundary

Prepared by the Georgia Department of Transportation, Office of Transportation Data, in cooperation with the U.S. Department of Transportation Federal Highway Administration. The Georgia Department of Transportation makes no representation or warranties, implied or expressed, concerning the accuracy, completeness, reliability, or suitability for any particular purpose of this information and data contained in this map.

Note: Inset maps are on different scales.

| Order # | Approval Date | Completion Date | Route Adjustment |
|-----------|---------------|-----------------|--|
| 3327 | 7/23/2006 | | Temporary State Route designation of Pine Barren Road and Pine Meadow Dr. as SR-1079, SR-1079TA & TB to support local road |
| FHWA APPR | 6/6/2007 | | Updated Functional Classification on William B. Wilson Dr, Gruman Road, and Robert B. Miller road as specified in Federal-aid File #282(1318R) |
| 3473 | 10/22/2008 | | Temporary SR-1181, 1181TA designation to support the widening & reconstruction of Gulfstream & Robert B. Miller, Jr. Roads |
| 3520 | 10/19/2010 | | Designate SR-21 as Savannah River Parkway |