

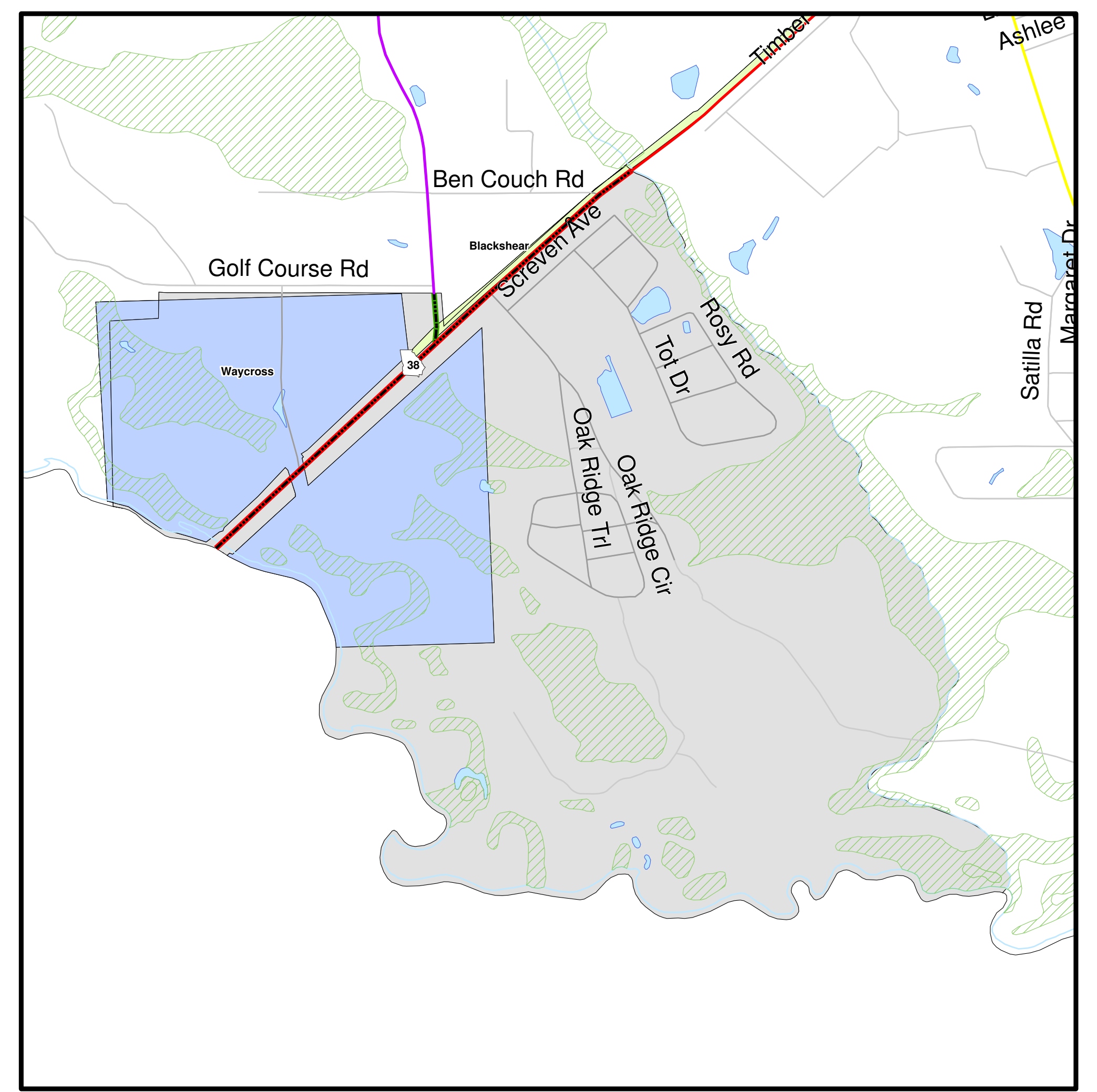
FUNCTIONAL CLASSIFICATION MAP

**PIERCE COUNTY  
GEORGIA**

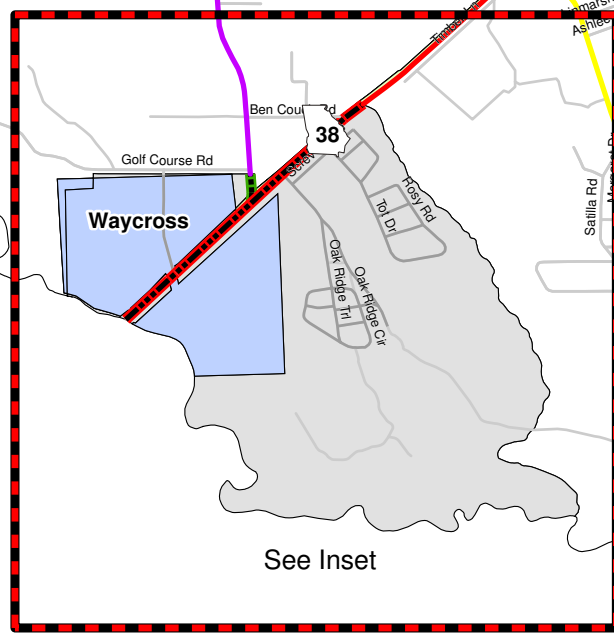
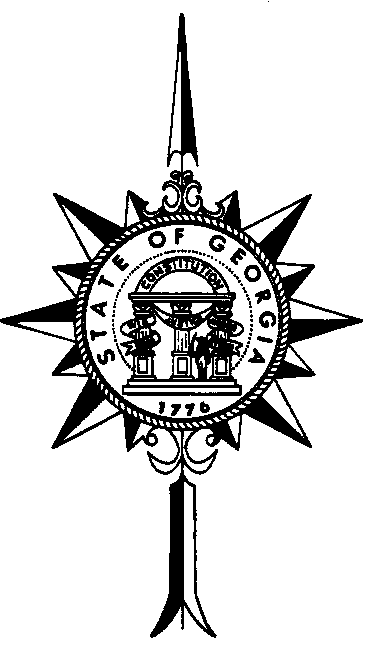
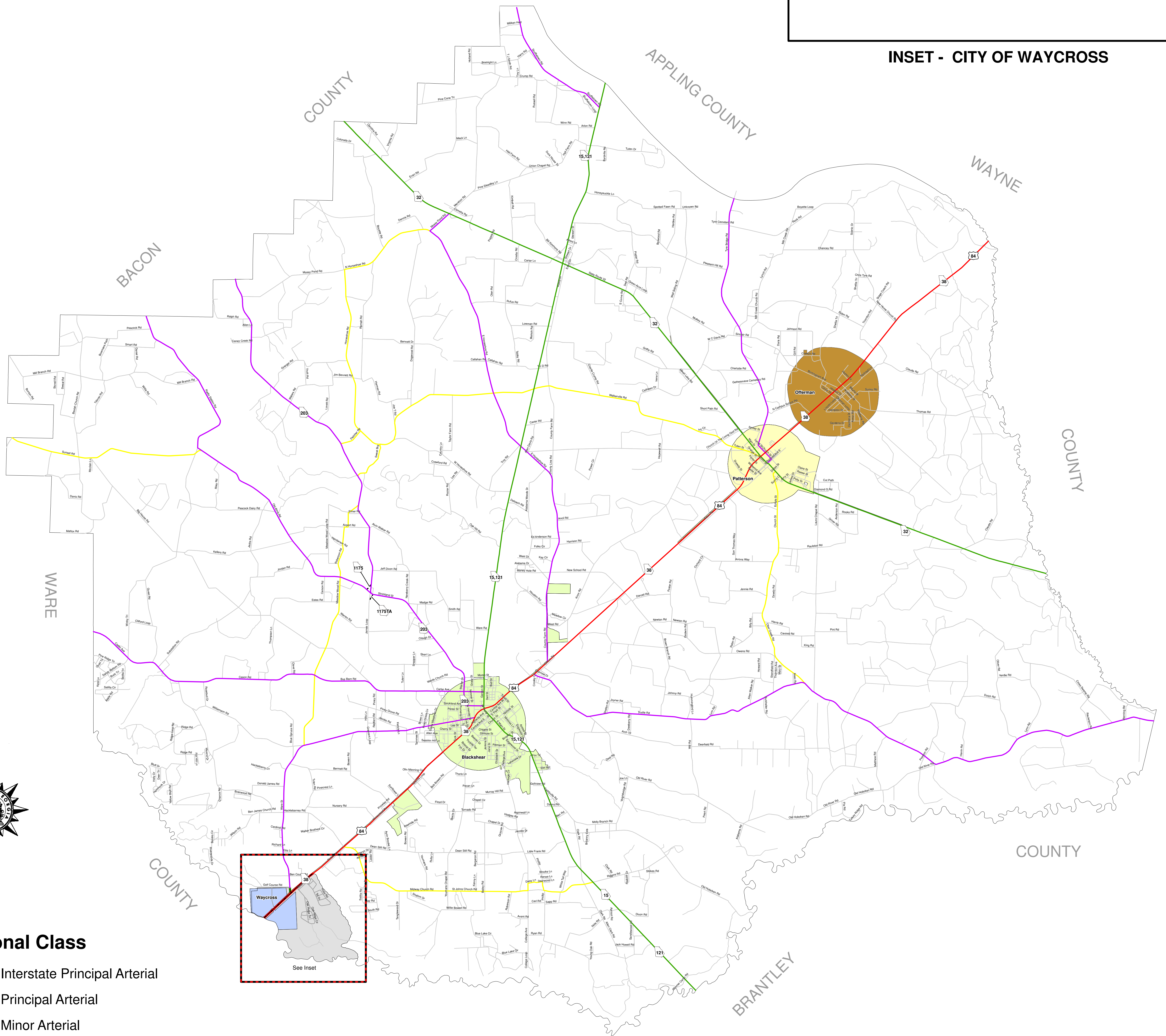
DEPARTMENT OF TRANSPORTATION  
DIVISION OF PLANNING, DATA, AND INTERMODAL DEVELOPMENT  
OFFICE OF TRANSPORTATION DATA  
IN COOPERATION WITH

U. S. DEPARTMENT OF TRANSPORTATION  
FEDERAL HIGHWAY ADMINISTRATION

State Highway, U.S. Route, and Functional Classification Systems as of 05/29/2007



**INSET - CITY OF WAYCROSS**



**Functional Class**

- Rural Interstate Principal Arterial
- Rural Principal Arterial
- Rural Minor Arterial
- Rural Major Collector
- Rural Minor Collector
- Rural Local Road
- Urban Interstate Principal Arterial
- Urban Freeways and Expressways
- Urban Principal Arterial
- Urban Minor Arterial
- Urban Collector Street
- Urban Local Street

SCB Date	Order #	Approval/Completion Date	Route Number	Description
5/29/2007	3464	5/23/2007	SR-203, 1175 & 1175TA	Intersection improvements SR-203 at CR-309

