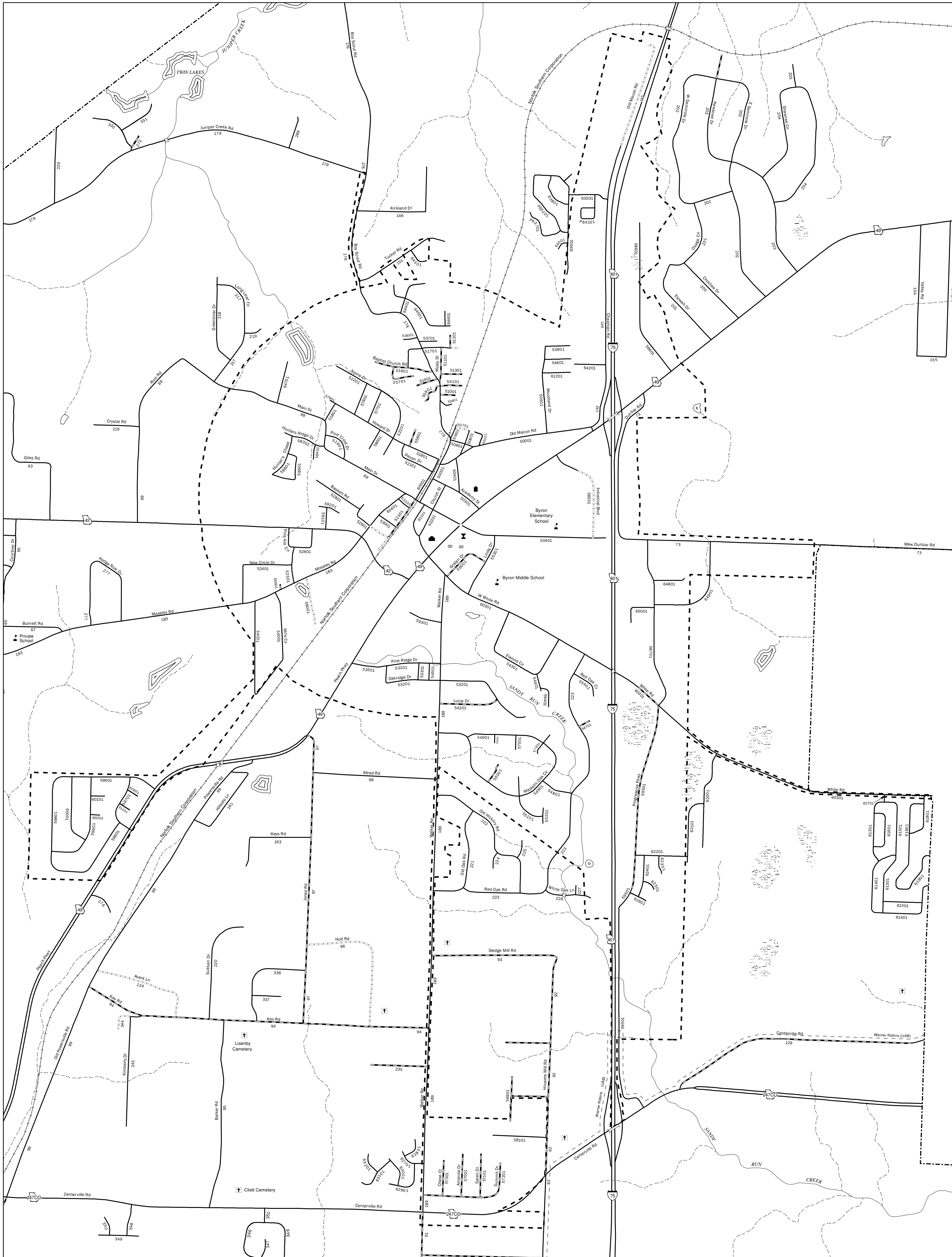
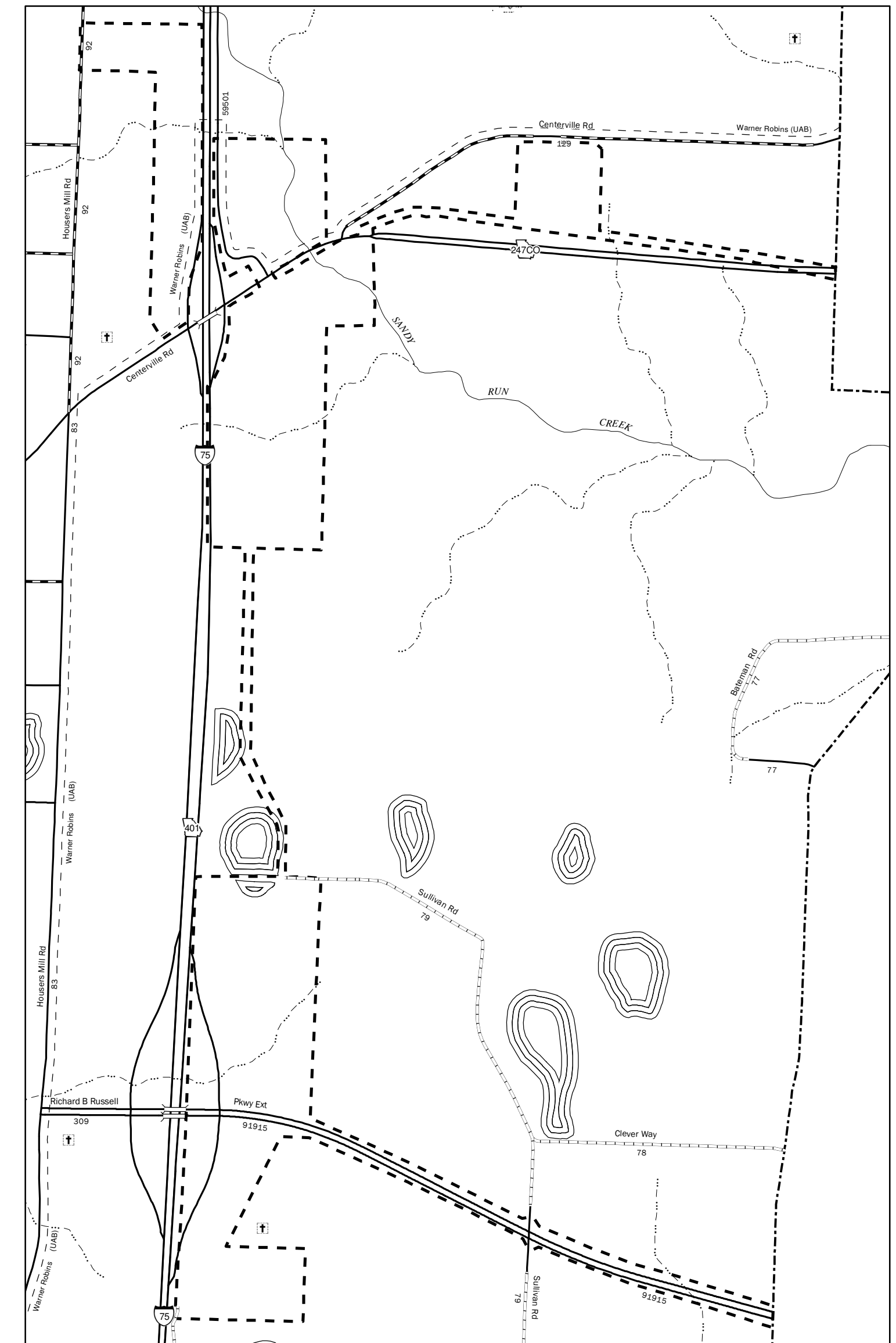


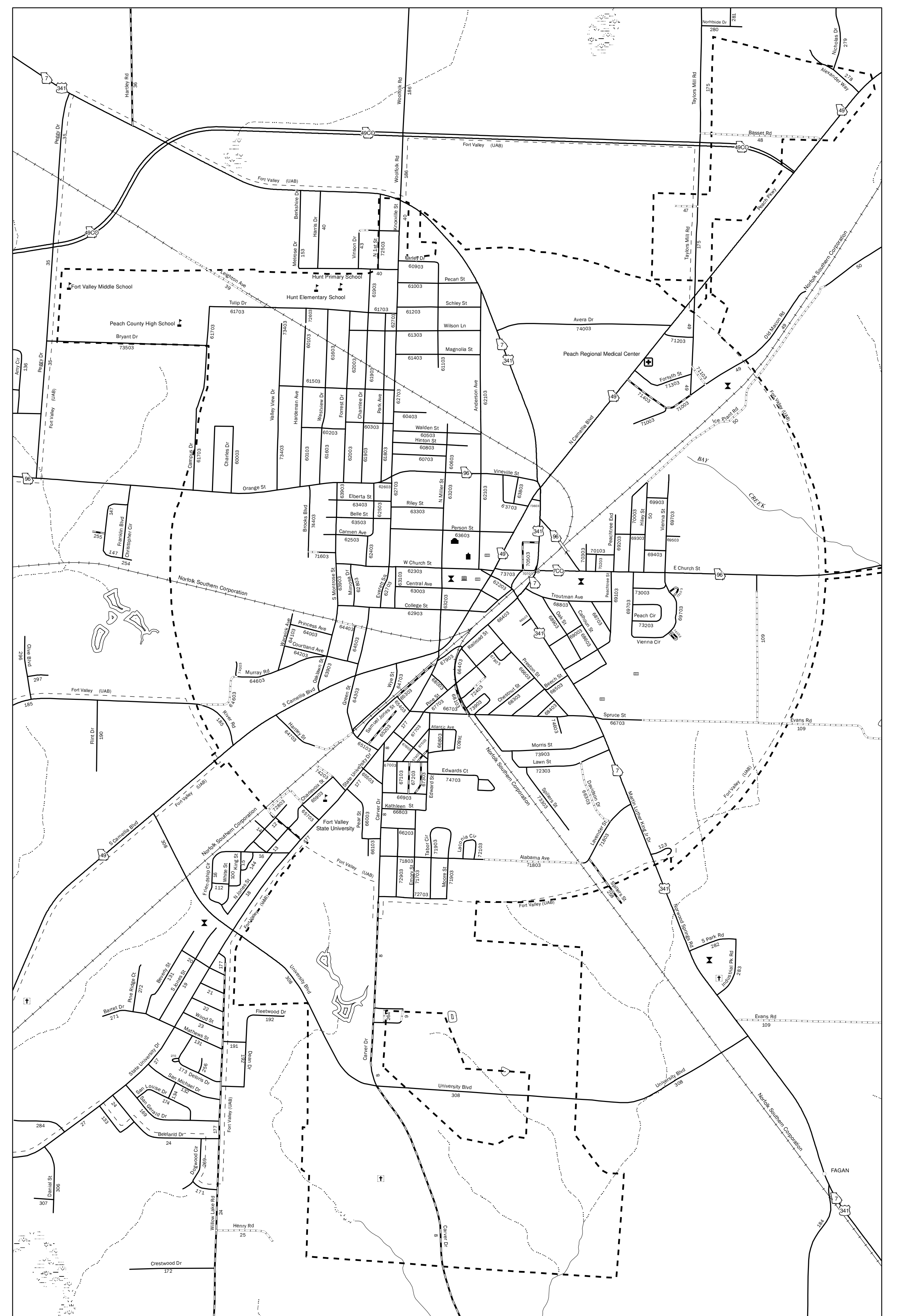
Byron



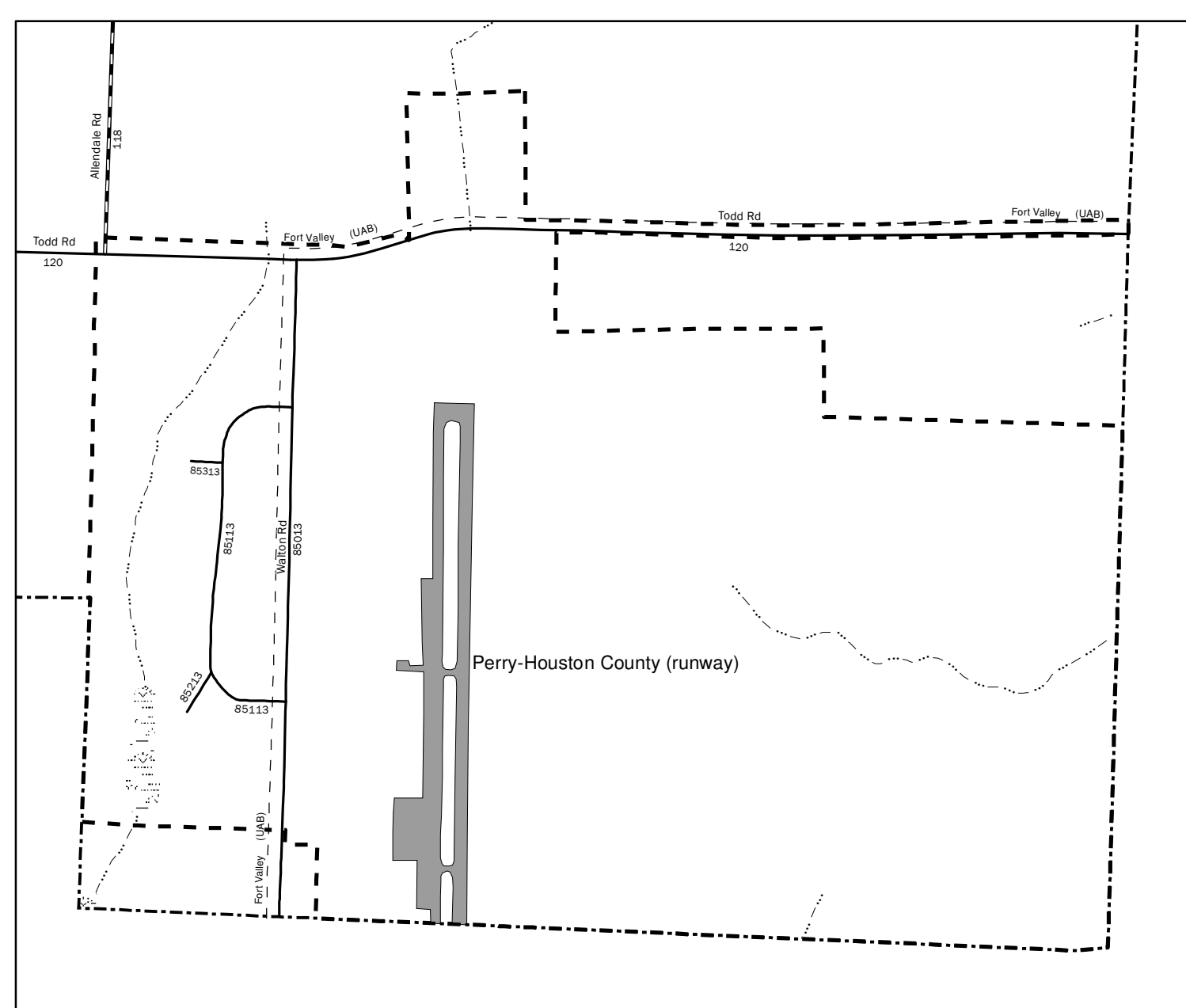
Warner Robins



Fort Valley



Perry



COUNTY MAP DISCLAIMER:
THE GEORGIA DEPARTMENT OF TRANSPORTATION MAKES NO REPRESENTATION OR WARRANTY, IMPLIED OR EXPRESSED, CONCERNING THE ACCURACY, COMPLETENESS, RELIABILITY, OR SUSTAINABILITY FOR ANY PARTICULAR PURPOSE OF THIS INFORMATION AND DATA CONTAINED IN THIS MAP.

WHILE EFFORTS HAVE BEEN MADE TO ENSURE THAT INFORMATION REPRESENTED ON THIS MAP IS AS ACCURATE AS POSSIBLE, THIS MAP REPRESENTS THE BEST AVAILABLE SPATIAL DATA AS OF JUNE 2016. IF THERE IS A DISCREPANCY BETWEEN THE DATA REPRESENTED ON THIS MAP AND THE WRITTEN RECORD OF THE STATE HIGHWAY SYSTEM AND COUNTY ROAD SYSTEM, THE OFFICIAL WRITTEN RECORD (PER STATE CODE 30-4-2) SHALL HAVE PRECEDENCE.

IN ADDITION, PLEASE NOTE THAT PROPOSED STATE ROUTE CORRIDORS OR EXISTING ROUTES THAT WERE DESIGNATED WITH TEMPORARY STATE ROUTE DESIGNATIONS AT THE TIME OF MAP PRODUCTION MAY NOT BE REPRESENTED.

FOR ADDITIONAL INFORMATION OR ACCESS TO THE WRITTEN RECORDS, PLEASE CONTACT THE OFFICE OF TRANSPORTATION DATA AT (770) 986-1360 OR BY EMAIL AT OTDCustomerSvc@dot.ga.gov.

A LIST OF MAPS CREATED AND MAINTAINED BY THE DEPARTMENT OF TRANSPORTATION IS AVAILABLE. FOR MORE INFORMATION PLEASE VISIT <http://www.dot.ga.gov>.

ALL URBAN AREA BOUNDARIES AND TRANSPORTATION FEATURES INCLUDING ROUTES, BRIDGES, RAILROADS, AIRPORT RUNWAYS, HELIPADS AND SHIELDS ARE PROVIDED BY GEORGIA DEPARTMENT OF TRANSPORTATION. FOR MORE INFORMATION PLEASE VISIT <http://www.dot.ga.gov>.

THE URBAN AREA BOUNDARY (UAB) LINE WORK REPRESENTED ON THE MAP WAS CREATED IN 2003 FOR THE PURPOSE OF RECLASSIFYING ROADS BASED ON THE RESULTS OF THE 2000 CENSUS. THIS MAY IN SOME CASES RESULT IN DISCREPANCIES BETWEEN THE ALIGNMENT OF THE UAB LINE WORK AND THE MORE CURRENT DEPARTMENT OF COMMUNITY AFFAIRS CITY LIMIT LINE WORK THAT HAS BEEN MODIFIED SINCE THAT TIME.

ALL HYDROGRAPHY FEATURES ARE PROVIDED FROM THE UNITED STATES GEOLOGICAL SURVEY NATIONAL HYDROGRAPHY DATASET. FOR MORE INFORMATION PLEASE VISIT <http://nhd.usgs.gov>.

ALL COUNTY AND CITY BOUNDARIES ARE PROVIDED BY THE GEORGIA DEPARTMENT OF COMMUNITY AFFAIRS. FOR MORE INFORMATION PLEASE VISIT <http://www.dca.state.ga.us>.

ALL STATE PROPERTY BOUNDARIES ARE PROVIDED BY THE GEORGIA DEPARTMENT OF NATURAL RESOURCES. FOR MORE INFORMATION PLEASE VISIT <http://www.gadnr.org>.

ALL HOSPITAL LOCATIONS ARE PROVIDED BY THE GEORGIA DEPARTMENT OF COMMUNITY HEALTH. FOR MORE INFORMATION PLEASE VISIT <http://doh.dhs.gov>.

ALL PUBLIC K-12 SCHOOL LOCATIONS ARE PROVIDED BY THE GEORGIA GIS DATA CLEARINGHOUSE. FOR MORE INFORMATION PLEASE VISIT <http://www.gis.dhs.gov>.

ALL NATIONAL PARK AND NATIONAL FOREST BOUNDARIES ARE PROVIDED BY THE NATIONAL PARK SERVICE. FOR MORE INFORMATION PLEASE CONTACT <http://www.nps.gov>.

ALL COUNTY AND CITY BOUNDARIES AND COUNTY SEAT LOCATIONS ARE PROVIDED BY THE UNITED STATES GEOLOGICAL SURVEY GEOGRAPHIC NAMES INFORMATION SYSTEM. FOR MORE INFORMATION PLEASE VISIT <http://geonames.usgs.gov>.

ALL FIRE STATION, LIBRARY, CORRECTIONAL FACILITY, LAW ENFORCEMENT, COURTHOUSE, COLLEGE, UNIVERSITY AND PRIVATE SCHOOL LOCATIONS PROVIDED BY THE GEORGIA DEPARTMENT OF COMMUNITY AFFAIRS. FOR MORE INFORMATION PLEASE VISIT <http://www.dca.state.ga.us>.

© 2016 GEORGIA DEPARTMENT OF TRANSPORTATION. ALL RIGHTS RESERVED. ANY REPRODUCTION IN PART OR IN WHOLE IS PROHIBITED UNLESS AUTHORIZED BY THE GEORGIA DEPARTMENT OF TRANSPORTATION.

LEGEND

Helipad	Unpaved Road
Welcome Center	County Road Number
County Seat	Community
Courthouse	Airport Runway
County Boundary	Interstate
National/State Land	Route Number
Divided Highway	City Boundary
National Register	City/County Elevation
Historical Place	
State Route Number	Paved Road
Military Reservation	County Seat
Lake	County Seat
Lighthouse	Weight Station
Fish Hatchery	Library
Urban Area Boundary	City Hall
Intermittent Stream	Correctional Facility/ Law Enforcement
Perennial Stream	Rest Area
School	Swamp/Marsh
US Route Number	State Capitol
Public Byway	Hospital
Bridge	Railroad
Proclamation	Projected Alignment
	Cemetery

GENERAL HIGHWAY MAP
PEACH COUNTY
GEORGIA

PREPARED BY THE
DEPARTMENT OF TRANSPORTATION
OFFICE OF TRANSPORTATION DATA
IN COOPERATION WITH
U.S. DEPARTMENT OF TRANSPORTATION
FEDERAL HIGHWAY ADMINISTRATION
2010

0 0.25 0.5 1
SCALE IN MILES (1" = 1/4 mile) for All Cities

