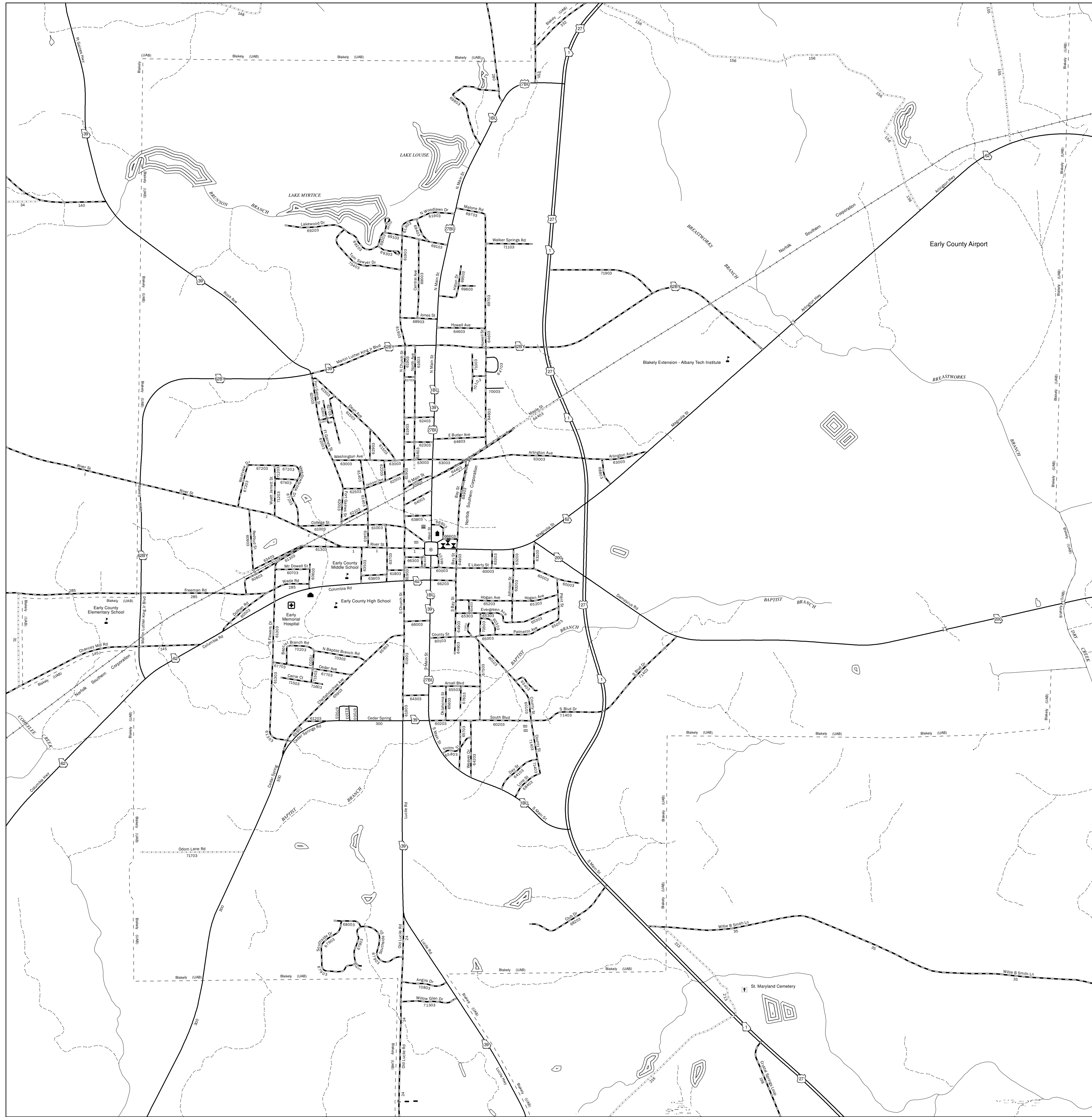
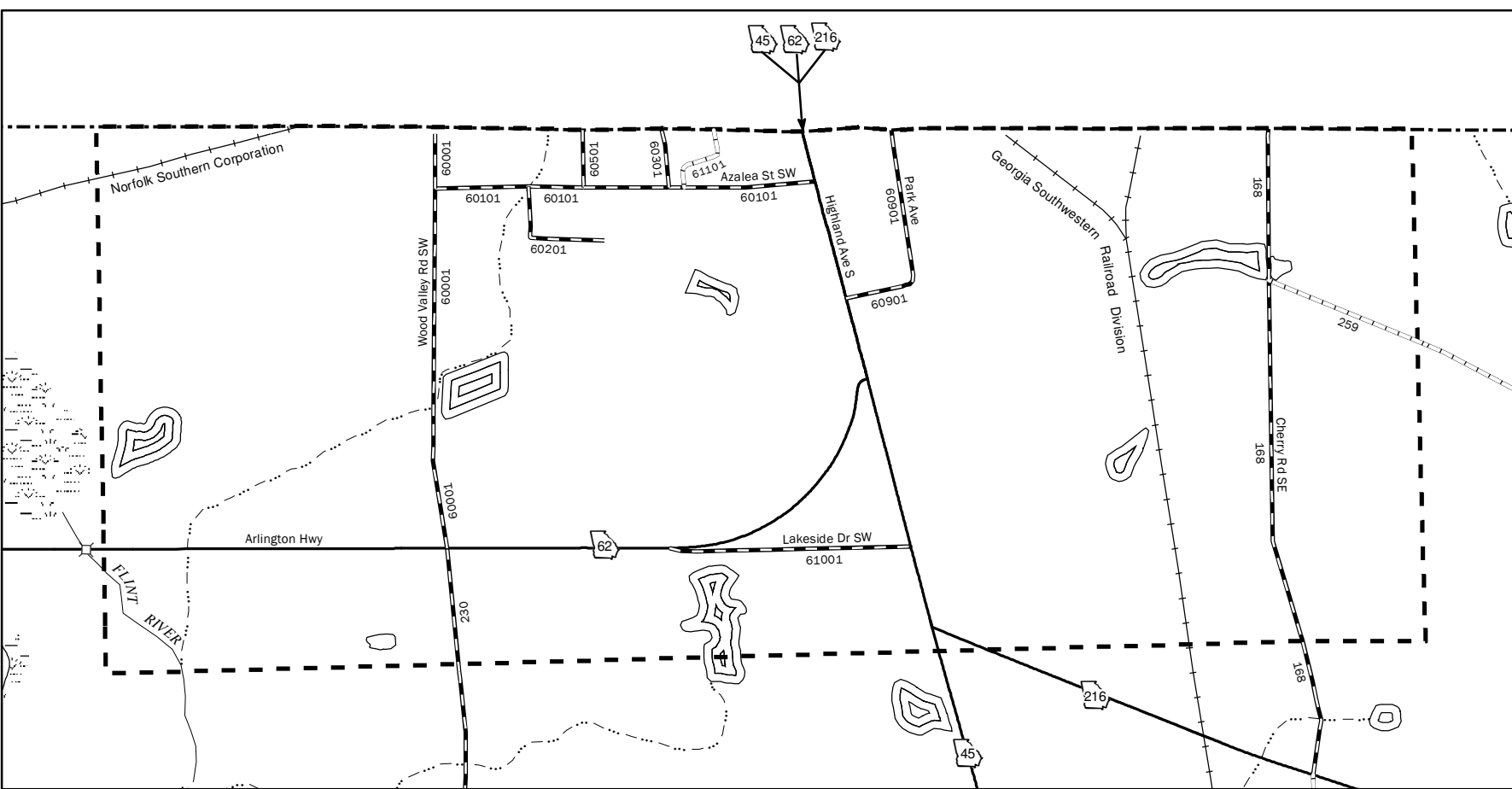


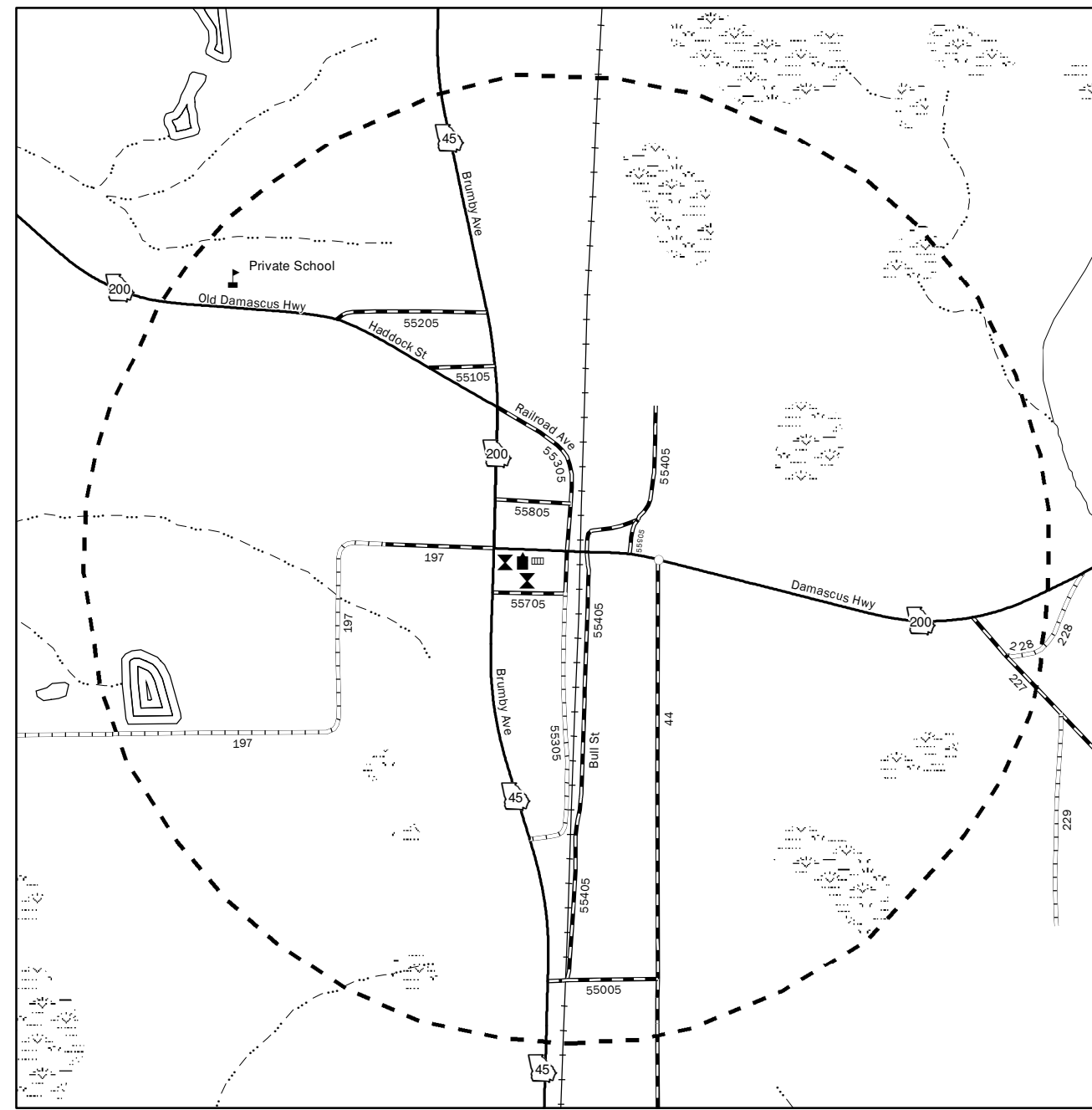
Blakely



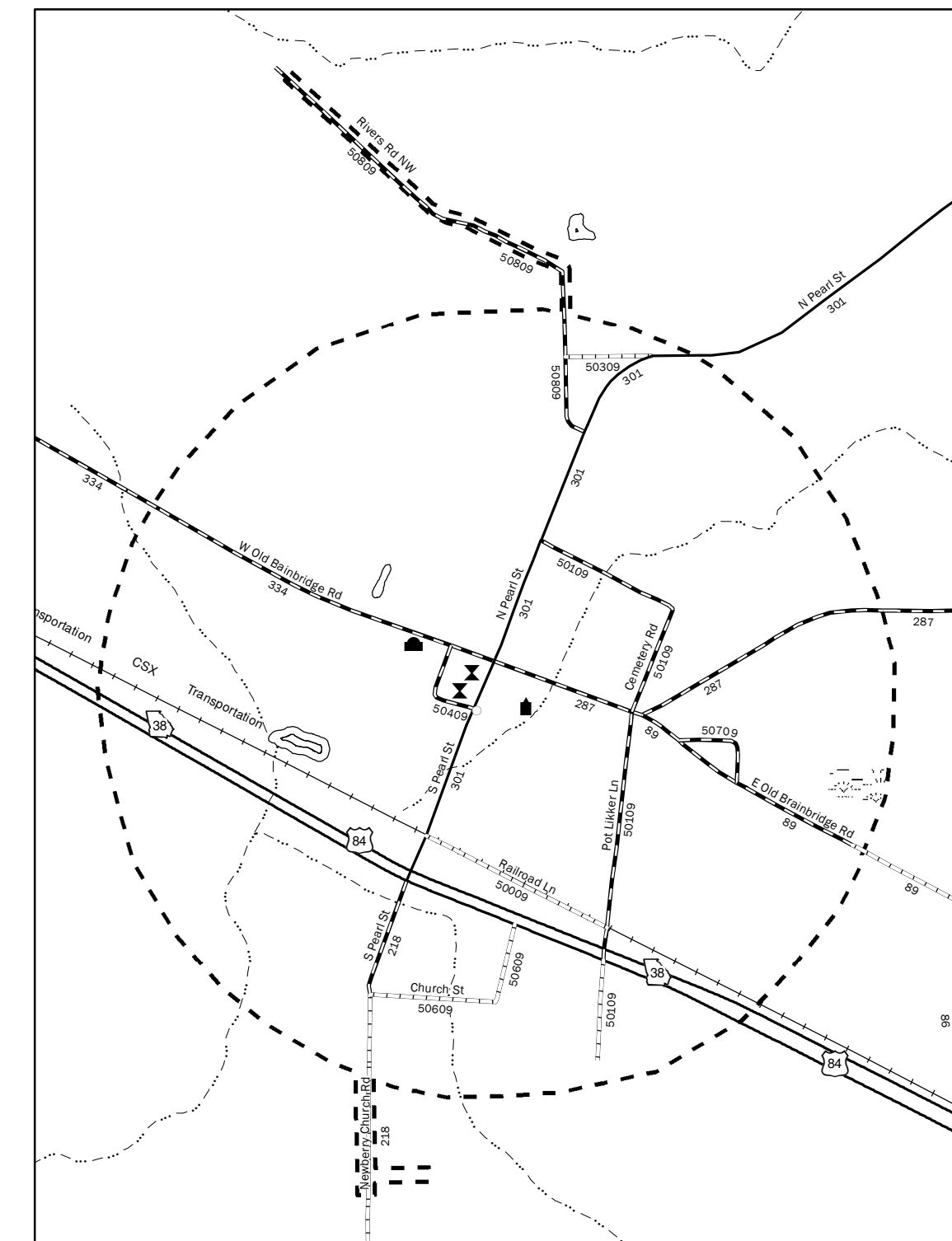
Arlington



Damascus



Jakin



COUNTY MAP DISCLAIMER:
 THE GEORGIA DEPARTMENT OF TRANSPORTATION MAKES NO REPRESENTATION OR WARRANTY, IMPLIED OR EXPRESSED, CONCERNING THE ACCURACY, COMPLETENESS, RELIABILITY, OR SUSTAINABILITY FOR ANY PARTICULAR PURPOSE OF THIS INFORMATION AND DATA CONTAINED IN THIS MAP.

WHILE EFFORTS HAVE BEEN MADE TO ENSURE THAT INFORMATION REPRESENTED ON THIS MAP IS AS ACCURATE AS POSSIBLE, THIS MAP REPRESENTS THE BEST AVAILABLE SPATIAL DATA AS OF MARCH 2010. IF THERE IS A DISCREPANCY BETWEEN THE DATA REPRESENTED ON THIS MAP AND THE WRITTEN RECORD OF THE STATE HIGHWAY SYSTEM AND COUNTY ROAD SYSTEM, THE OFFICIAL WRITTEN RECORD (PER STATE CODE 32-4-2) SHALL HAVE PRECEDENCE.

IN ADDITION, PLEASE NOTE THAT PROPOSED STATE ROUTE CORRIDORS OR EXISTING ROUTES THAT WERE DESIGNATED WITH TEMPORARY STATE ROUTE DESIGNATIONS AT THE TIME OF MAP PRODUCTION MAY NOT BE REPRESENTED.

FOR ADDITIONAL INFORMATION OR ACCESS TO THE WRITTEN RECORDS, PLEASE CONTACT THE OFFICE OF TRANSPORTATION DATA AT (770) 986-1360 OR BY EMAIL AT OTDCustomerService@dot.ga.gov.

A LIST OF MAPS CREATED AND MAINTAINED BY THE DEPARTMENT OF TRANSPORTATION IS AVAILABLE. FOR MORE INFORMATION PLEASE VISIT <http://www.dot.ga.gov>.

ALL URBAN AREA BOUNDARIES AND TRANSPORTATION FEATURES INCLUDING ROUTES, BRIDGES, RAILROADS, AIRPORT RUNWAYS, HELIPADS AND SHIELDS ARE PROVIDED BY GEORGIA DEPARTMENT OF TRANSPORTATION. FOR MORE INFORMATION PLEASE VISIT <http://www.dot.ga.gov>.

THE URBAN AREA BOUNDARY (UAB) LINE WORK REPRESENTED ON THE MAP WAS CREATED IN 2003 FOR THE PURPOSE OF RECLASSIFYING ROADS BASED ON THE RESULTS OF THE 2000 CENSUS. THIS MAY IN SOME CASES RESULT IN DISCREPANCIES BETWEEN THE ALIGNMENT OF THE UAB LINE WORK AND THE MORE CURRENT DEPARTMENT OF COMMUNITY AFFAIRS CITY LIMIT LINE WORK THAT HAS BEEN MODIFIED SINCE THAT TIME.

ALL HYDROGRAPHY FEATURES ARE PROVIDED FROM THE UNITED STATES GEOLOGICAL SURVEY NATIONAL HYDROGRAPHY DATASET. FOR MORE INFORMATION PLEASE VISIT <http://nhd.usgs.gov>.

ALL COUNTY AND CITY BOUNDARIES ARE PROVIDED BY THE GEORGIA DEPARTMENT OF COMMUNITY AFFAIRS. FOR MORE INFORMATION PLEASE VISIT <http://www.dca.state.ga.us>.

ALL STATE PROPERTY BOUNDARIES ARE PROVIDED BY THE GEORGIA DEPARTMENT OF NATURAL RESOURCES. FOR MORE INFORMATION PLEASE VISIT <http://www.gdnr.org>.

ALL HOSPITAL LOCATIONS ARE PROVIDED BY THE GEORGIA DEPARTMENT OF COMMUNITY HEALTH. FOR MORE INFORMATION PLEASE VISIT <http://doh.dhs.gov>.

ALL PUBLIC K-12 SCHOOL LOCATIONS ARE PROVIDED BY THE GEORGIA GIS DATA CLEARINGHOUSE. FOR MORE INFORMATION PLEASE VISIT <http://www.gis.easb.ga.us>.

ALL NATIONAL PARK AND NATIONAL FOREST BOUNDARIES ARE PROVIDED BY THE NATIONAL PARK SERVICE. FOR MORE INFORMATION PLEASE CONTACT <http://www.nps.gov>.

ALL COMMUNITY LOCATIONS AND COUNTY SEAT LOCATIONS ARE PROVIDED BY THE UNITED STATES GEOLOGICAL SURVEY GEOGRAPHIC NAMES INFORMATION SYSTEM. FOR MORE INFORMATION PLEASE VISIT <http://geonames.usgs.gov>.

ALL FIRE STATION, LIBRARY, CORRECTIONAL FACILITY, LAW ENFORCEMENT, COURTHOUSE, COLLEGE, UNIVERSITY AND PRIVATE SCHOOL LOCATIONS ARE PROVIDED BY THE GEORGIA DEPARTMENT OF COMMUNITY AFFAIRS. FOR MORE INFORMATION PLEASE VISIT <http://www.dca.state.ga.us>.

© 2010 GEORGIA DEPARTMENT OF TRANSPORTATION. ALL RIGHTS RESERVED. ANY REPRODUCTION IN PART OR IN WHOLE IS PROHIBITED UNLESS AUTHORIZED BY THE GEORGIA DEPARTMENT OF TRANSPORTATION.

LEGEND

- Helipad
- Welcome Center
- Courthouse
- National/State Land
- Divided Highway
- National Register Historical Place
- State Route Number
- Military Reservation
- Lighthouse
- Fish Hatchery
- Urban Area Boundary
- Intermittent Stream
- Perennial Stream
- School
- US Route Number
- Public Road Number
- Scenic Byway
- Bridge
- Freight Station
- Unpaved Road
- County Road Number
- Community
- Airport Runway
- Interstate Route Number
- Population
- City Boundary
- City Center
- Elevation
- Paved Road
- County Seat
- Bituminous Road
- Weight Station
- Library
- City Hall
- Correctional Facility/Law Enforcement
- Rest Area
- Swamp/Marsh
- State Capitol
- Hospital
- Railroad
- Projected Alignment
- Cemetery

GENERAL HIGHWAY MAP
EARLY COUNTY
GEORGIA

PREPARED BY THE
 DEPARTMENT OF TRANSPORTATION
 OFFICE OF TRANSPORTATION DATA
 IN COOPERATION WITH
 U.S. DEPARTMENT OF TRANSPORTATION
 FEDERAL HIGHWAY ADMINISTRATION
 2010

