

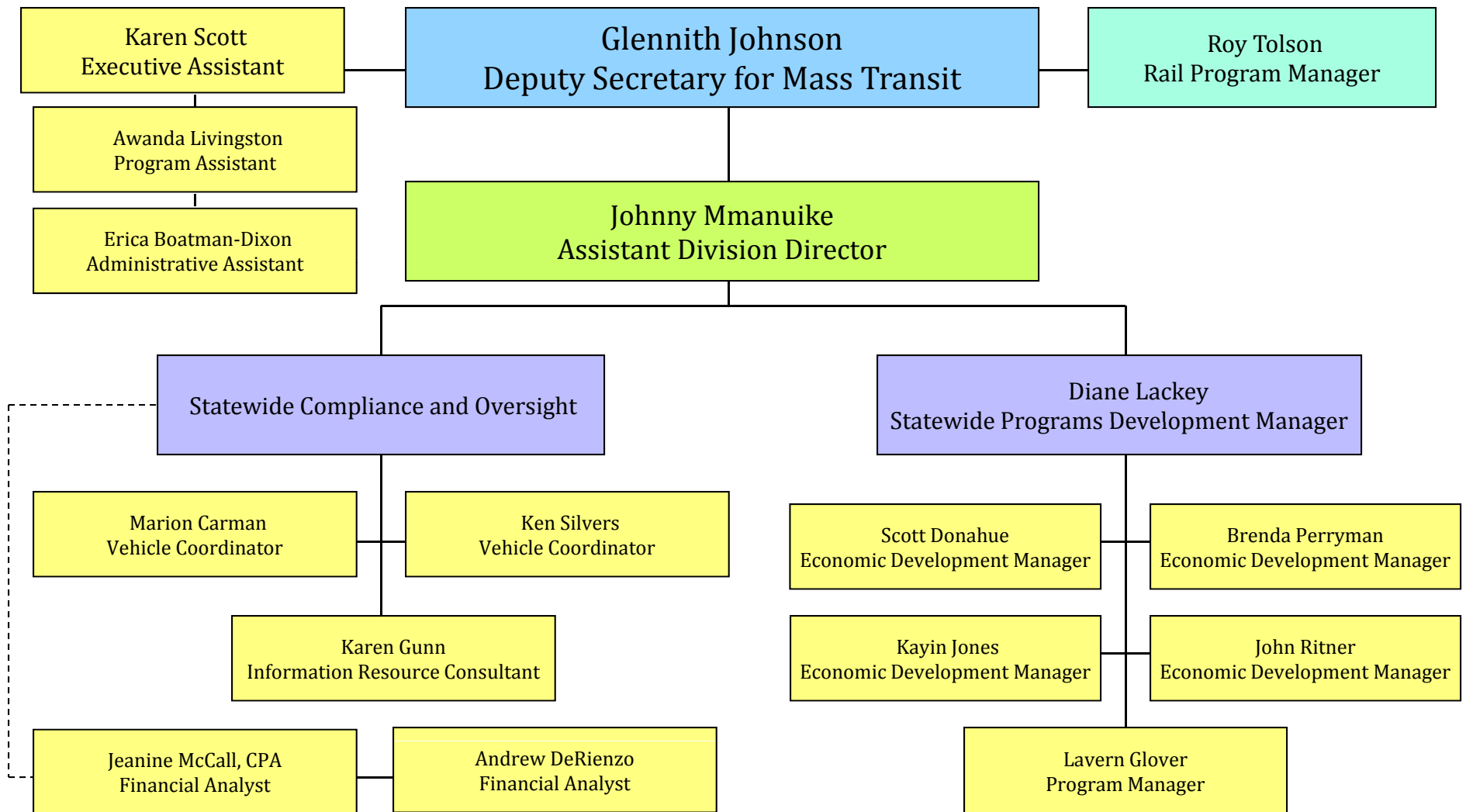
Rail Program Update

*Southeast High Speed Rail Partners
Meeting - Georgia Dept. Of Transportation*

Roy Tolson, Rail Program Manager

January 25, 2010

SCDOT Division of Mass Transit





Division of Mass Transit - Rail

- ❑ Coordinates Rail Passenger Service
- ❑ High-Speed Rail (HSR) Planning and Development
- ❑ Power to apply for state, federal, or other funds for rail passenger service
- ❑ Responsible for preserving railroad rights of way for future use



Southeast High Speed Routes in S.C.

- Upstate Route 122 miles
- Midstate Route 205 miles

Volpe Feasibility Study





High-speed rail planning and development

- The Volpe Center Study –Report received August 2008.
 - Validated the decision of the Congress and USDOT to designate this corridor as high speed
 - Establishes the justification for continued interest and progress toward developing high speed rail along this corridor
 - Provides a good first step that must be considered as we move forward with more detailed studies



Freight Rail Service

- Upstate Corridor – 20-32 freight trains and 2 passenger trains daily
- Midstate corridor – 5-8 freight trains and 2 passenger trains daily
- Coastal Corridor – 22-29 freight trains and 2 passenger trains daily



Additional Coordination of Rail Activities at SCDOT

- Rail Highway Grade Crossing Improvement Program – Darrell B. Munn, P.E.
- Railroad Office – Sherri L. Devereaux
- The Planning Office – Doug Frate
- Operation Lifesaver
- AASHTO Standing Committee on Rail Transportation (SCORT)
- FHWA/FRA



Rail Highway Grade Crossing Improvement Program – TE

- RAILROAD CROSSINGS IN SC
 - PUBLIC AT-GRADE CROSSINGS
 - Total: 2670
 - Gated: 1038
 - Flashing Lights Only: 368
- CROSSINGS WITHOUT ACTIVE PROTECTION: 1264 (47%)



RAILROAD CROSSINGS IN SC

- PUBLIC AT-GRADE CROSSINGS ON DESIGNATED HIGH SPEED LINES
 - Total: 444
 - Gated: 345
 - Flashing Lights Only: 3
- CROSSINGS WITHOUT ACTIVE PROTECTION: 96



RAILROAD CROSSINGS IN SC

- ❑ Section 130 Funding: \$4,000,000.
- ❑ Average cost of flashing lights with gates: \$190,000 (so currently this equates to about 20 projects per year).
- ❑ Funding needed to equip crossings currently qualifying for gates: \$309,700,000 (over 77 years worth at the current level)



Railroad Office - R/W

Manages SCDOT projects which require coordination with any of the various railroad companies.

Works closely with TE on railroad safety projects.

So now we know the status of Rail at SCDOT...

