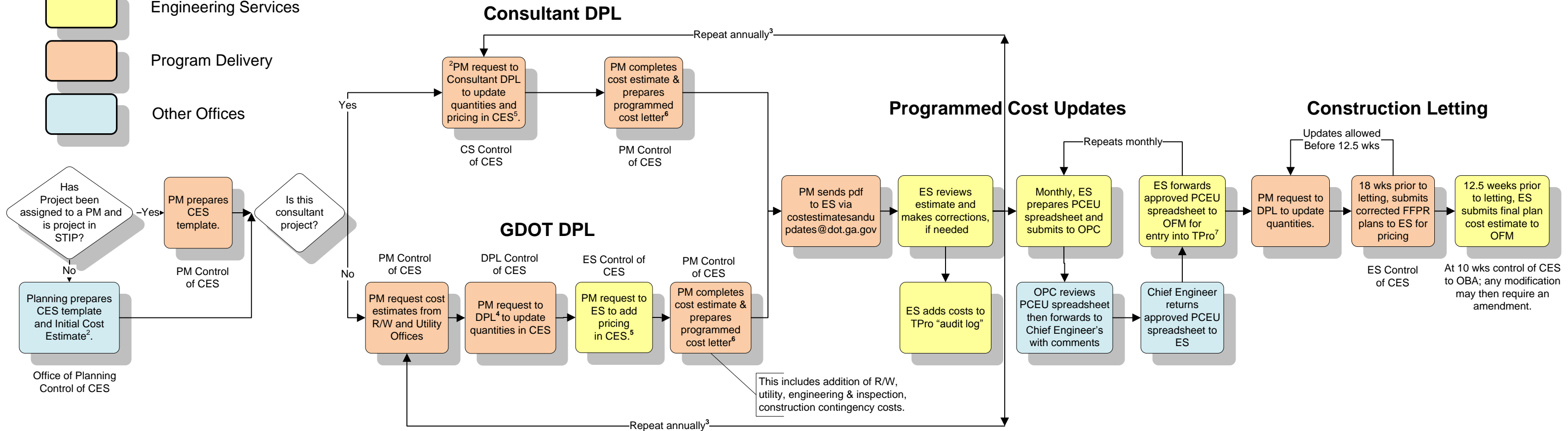
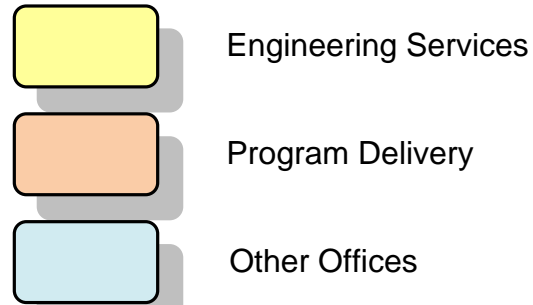


CES Cost Estimating Process (GDOT let projects only)

Print this page as 11"x17"

Color Coding GDOT Office



List of Acronyms:

- | | |
|--|---|
| AASHTO = American Association of State Highway & Transportation Officials | OPC = Office of Program Control |
| CES = AASHTO Trns*port Cost Estimation System | OPD = Office of Program Delivery |
| CS = consultant | PCEU = Project Cost Estimate Update |
| DPL = Design Phase Leader | Pdf = portable document format |
| FFPR = Final Field Plan Review | PFPR = Preliminary Field Plan Review |
| OBA = Office of Bidding Administration | PM = project manager |
| ES = Office Engineering Services | STIP = State Transportation Improvement Program |
| OFM = Office of Financial Management | TPro = GDOT project management system computer program |

Notes:

- See GDOT Policy 3A-9 Project Programming & Cost Estimating Purpose for detailed guidance relating to cost estimates and the update of programmed costs.
- The initial cost estimate should be prepared by the Office of Planning prior to addition of a project to the STIP.
- An intermediate cost estimate shall be prepared: (1) at both Concept and PFPR milestones, (2) when there has been a 10% or more cost change or significant scope change since the last programmed cost letter, or (3) if 12 months has elapsed since the last programmed cost letter. A programmed cost letter must then be submitted for all intermediate cost estimates where either (2) and (3) noted above applies. A programmed cost letter shall also be submitted by October 1 where the current programmed cost letter is older than April 1 of the current year. Engineering Services shall notify the State Program Delivery Engineer of all programmed cost estimate updates. For FFPR, quantities must be updated in CES, but no cost estimate is required unless the second two cases above apply.
- The DPL/ES will notify the PM (by e-mail) after completing entries into CES. Other offices will provide the DPL with a list of pay item numbers, descriptions, quantities, and units, as applicable. The DPL will also add appropriate quantities into the asphalt/and fuel indices spreadsheet and e-mail the spreadsheet to the PM.
- Pricing includes the addition of unit costs and regional price factors as well as costs for lump sum items.
- Programmed cost letter estimates shall be in today's dollars. OFM will add inflation factors based on programmed year and current inflation index.
- GDOT staff can request a CES user account from the GDOT Solutions Center. Consultants should request access through the project PM.

