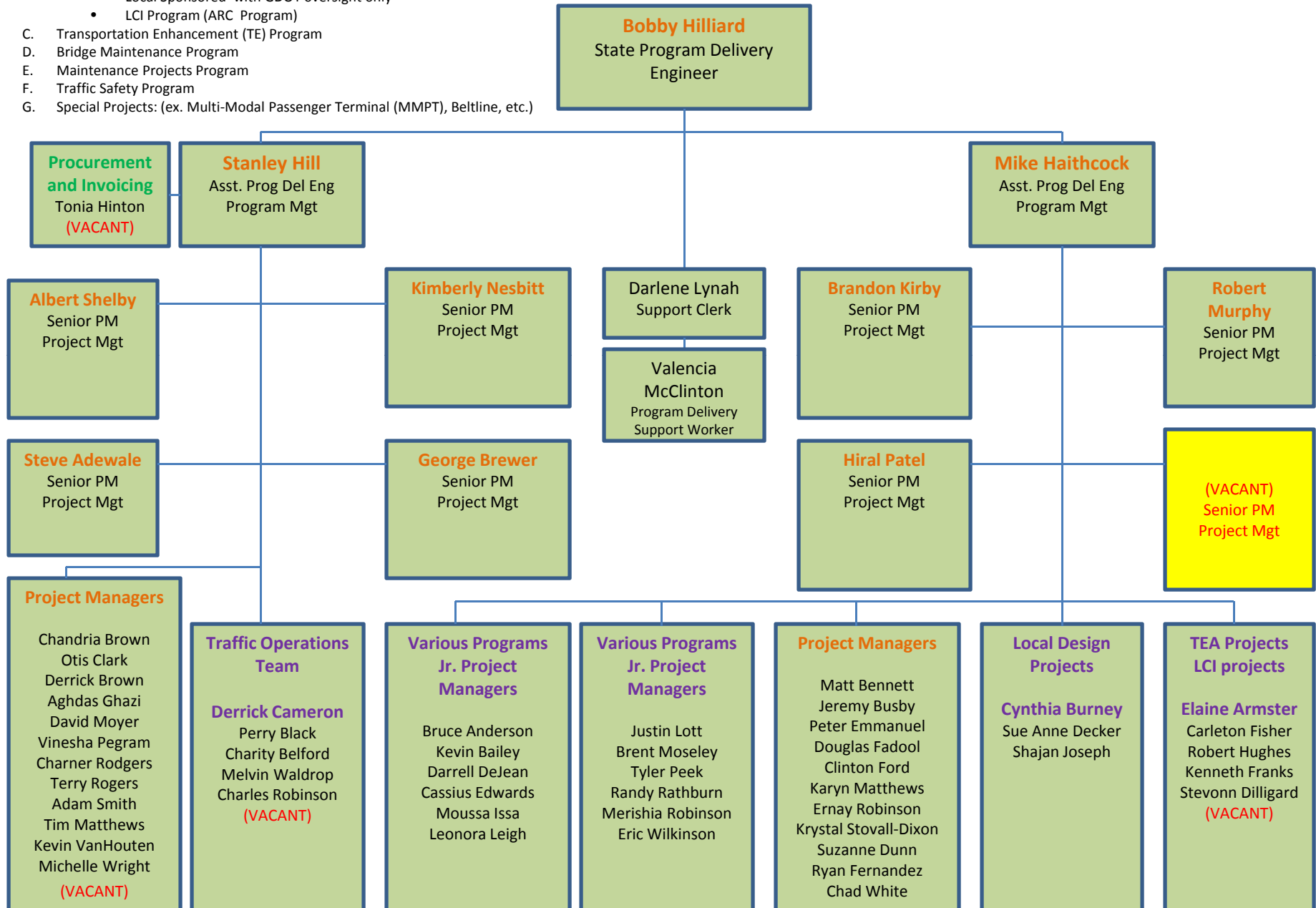


Delivery Programs

- A. "Conventional" GDOT Administered Projects (GDOT PE, ROW and Letting)
- B. Locally Administered Projects (local PE and/or Local letting)
 - Local Sponsored with GDOT oversight only
 - LCI Program (ARC Program)
- C. Transportation Enhancement (TE) Program
- D. Bridge Maintenance Program
- E. Maintenance Projects Program
- F. Traffic Safety Program
- G. Special Projects: (ex. Multi-Modal Passenger Terminal (MMPT), Beltline, etc.)

Program Delivery Organization Chart

Rev. 10-21-2011



Program Delivery Organization Chart
(Revised: 10-20-2011) Staff = 68 (includes 7 Vacancies)

- Vacant Positions = 7
1. 1 - Assistant Office Head (P.G. 20)
 2. 2 - Senior Project Managers (P.G. 19)
 3. 3 - Associate Project Managers (P.G. 18)
 4. 1 - Jr. Project Manager (P.G. 15)
 5. 1 - Contract Technician (P.G. 12)
 6. 2 - Program Technician (P.G. 12)
 7. 1 - Administrative Assistant 3 (P.G. 12)